

READING LIGHTS

NANO-FLEX

Reading light

LIGHT SOURCE



POWER 1 W



> 90



- ▶ 2700K
- ▶ 3000K
- ▶ 4000K



RGBW not available

OPTIC

Available optics



35-60°



WALL

PLAN

FIXTURE

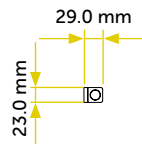
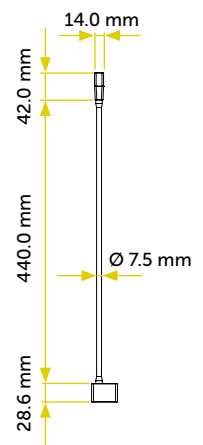
Material	Brass
Finish	<ul style="list-style-type: none"> ▶ Anodization ▶ Galvanization* ▶ Coating <small>*For interiors only</small>
IP Rate	IP54
Fixing system	Screws

ELECTRICAL FEATURES

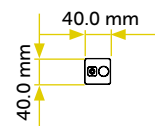
Driver	Integrated
Dimmable	PWM (100 – 500Hz)
Voltage	18 - 32Vdc
Protections	<ul style="list-style-type: none"> ▶ Reverse polarity ▶ 500V Spike ▶ Interference

MECHANICAL FEATURES

Dimensions	Wall - 29.0 x 23.0 x H 547.0 mm Plan - 40.0 x 40.0 x H 510.6 mm
Weight	300 gr
Use	Indoor



Wall



Plan